



COLUMBUS  
SPEECH & HEARING  
EST. 1923

# Columbus Speech & Hearing July Newsletter

## A Beautiful Day For Golf & Columbus Speech and Hearing



Columbus Speech & Hearing's 15th Annual Great Communicators Golf Classic, held at The Lakes Golf & Country Club on June 20<sup>th</sup> was an major success! Thank you to our amazing sponsors for their support. [Visit our website to catch a glimpse of this exceptional event and ways to become involved.](#)

## CSH Westerville Location is Open!



Columbus Speech & Hearing's Westerville location is now open and accepting appointments. We look forward to providing speech and audiology services to meet the growing demand in the Westerville community.

Call 614-263-5151 to schedule an appointment.



## ASL Classes

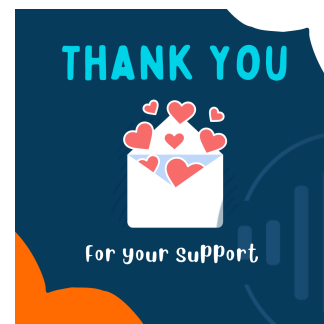
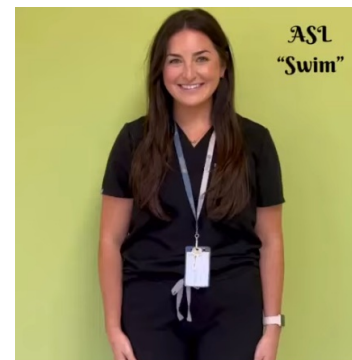
ASL I August 11 - September 29  
ASL I September 7 - October 26  
ASL I September 22 - November 10

ASL II August 15 - October 10  
ASL II September 14 - November 2  
**(IN PERSON)**

ASL III October 24 - December 24

ASL IV July 21 - September 8

## Sign of the Month: Swim



In May, central Ohio came together to support **United Way**

## Talk Tips To Go: Gestalt Language Processing

This month's Talk Tips to Go article by Sarah Denman offers a helpful overview of "gestalt language processing". Gestalt language processing is a type of language development that is seen more often in neurodiverse populations, such as autism. [Check out our website to learn more!](#)

---

## Hearing Protection in the Summer



Many outdoor activities in the summer can be extremely loud and possibly damaging to your ears. **Noise-induced hearing loss is 100% preventable.**

Read our latest article to see how you can protect your hearing and still have a memorable summer.

[Read More](#)

of Central Ohio's United for Impact campaign.

Thank you, United Way, and our community for supporting Columbus Speech & Hearing. The donations from United for Impact allow us to continue our mission of providing personalized, compassionate care to all individuals regardless of their ability to pay.

We are tremendously grateful to have a supportive community that believes in the work of CSH and the many other vital non-profits in central Ohio.

---



## How To Support Columbus Speech & Hearing

*No matter how you choose to give, we appreciate you investing in our mission.*

### [Online Donation](#)

**Mailed Donation:** 510 E. North Broadway, Columbus, OH 43214

### [AmazonSmile](#)

### [Kroger Community Rewards](#)

### [A gift of stock, IRA distribution or planned gift](#)

### [Supply Wish List for CSH](#)

Connect with us on Social Media!



[About Us](#) | [Contact Us](#) | [FAQs](#)

Columbus Speech & Hearing | 510 E. North Broadway, Columbus, OH 43214

[Unsubscribe resourcedev@columbusspeech.org](mailto:resourcedev@columbusspeech.org)

[Update Profile](#) | [Constant Contact Data Notice](#)

Sent by resourcedev@columbusspeech.org in collaboration with



Try email marketing for free today!